

## GENERAL NOTES

- REFERENCE THE SPECIFICATIONS FOR MATERIAL AND EQUIPMENT INSTALLATION STANDARDS.
- THE PLUMBING INSTALLATION SHALL COMPLY WITH ALL STATE AND LOCAL CODES.
- UTILITIES AND SERVICES INDICATED ARE TAKEN FROM VARIOUS OLD AND NEW SURVEYS, AS-BUILT RECORDS AND FIELD INVESTIGATIONS. UNFORESEEN CONDITIONS PROBABLY EXIST AND NEW WORK MAY NOT BE FIELD LOCATED EXACTLY AS SHOWN ON DRAWINGS. COOPERATION WITH OTHER TRADES IN ROUTING AND BURIAL DEPTHS, AS DETERMINED DURING CONSTRUCTION, WILL BE NECESSARY.
- FIELD VERIFY EXISTING INSTALLATIONS. MODIFY EXISTING PLUMBING SYSTEMS, WHICH ARE TO REMAIN ACTIVE, TO FACILITATE RECONNECTION AND EXTENSION OF THE NEW WORK.
- NOTIFY OWNER AT LEAST 48 HOURS PRIOR TO INTERRUPTING EXISTING SERVICE. SCHEDULE DISCONNECTION AND TIE-INS TO MINIMIZE DISRUPTION OF SERVICES. SERVICES ARE NOT TO BE LEFT DISRUPTED DURING NON-NORMAL CONTRACTOR WORKING HOURS. CONTRACTOR SHALL OBTAIN WRITTEN APPROVAL FOR INTERRUPTION OF SERVICE.
- PLANS ARE NOT COMPLETELY TO SCALE. PIPE ROUTING SHOWN IS SCHEMATIC AND IS NOT INTENDED TO INDICATE EXACT ROUTING. CONTRACTOR SHALL PROVIDE ANY ADDITIONAL OFFSETS AND FITTINGS REQUIRED FOR PROPER INSTALLATION AND TO MAINTAIN CLEARANCES. VERIFY STRUCTURAL, MECHANICAL AND ELECTRICAL INSTALLATIONS AND OTHER POTENTIAL OBSTRUCTIONS AND ROUTE PIPING TO AVOID INTERFERENCES.
- PROVIDE ALL OFFSETS AND FITTINGS AND MAKE CONNECTION TO SITE UTILITIES.
- CONCEAL PIPING ABOVE CEILINGS, WITHIN WALLS OR CHASES EXCEPT IN MECHANICAL ROOMS OR AS SPECIFICALLY NOTED.
- PROVIDE ACCESS PANELS FOR ALL VALVES CONCEALED IN WALLS OR ABOVE NON-ACCESSIBLE CEILINGS.
- SLEEVE AND/OR FIRESTOP ALL PENETRATIONS THROUGH RATED WALLS, CEILINGS, AND FLOORS WITH U/L LISTED ASSEMBLIES. FIRESTOP ASSEMBLIES SHALL BE EQUAL TO OR EXCEED THE RATING OF THE WALL, CEILING OR FLOOR. SEE ARCHITECTURAL DRAWINGS FOR FINAL FINISHES.
- FLASH AND COUNTER-FLASH ROOF PENETRATIONS.
- WHEN BEAM SLEEVE PENETRATIONS ARE NECESSARY, COORDINATE PENETRATIONS WITH ALL TRADES, THE ARCHITECT AND THE STRUCTURAL ENGINEER.
- PROVIDE FOUNDATION PAD PENETRATION SLEEVES. ALLOW 1" MINIMUM CLEARANCE BETWEEN SLEEVE INSIDE SURFACE AND PIPE EXTERIOR.
- SEE ARCHITECTURAL DRAWINGS FOR FIXTURE LOCATIONS AND MOUNTING HEIGHTS.
- PROVIDE AUTOMATIC TRAP PRIMERS FOR FLOOR DRAIN TRAP SEALS. TRAP PRIMERS ARE NOT REQUIRED ON FLOOR DRAINS RECEIVING CONTINUOUS CONDENSATE OR LOCATED IN SHOWERS. SEE FLOOR PLANS FOR ADDITIONAL INFORMATION.
- PROVIDE AN AIR GAP, WHEN REQUIRED BY CODE, SERVING INDIVIDUAL FIXTURES, DEVICES, APPLIANCES AND APPARATUS.
- ALL EXPOSED PIPE AND FITTINGS IN FINISHED AREAS SHALL BE CHROME PLATED.
- MOUNT WALL HYDRANTS 24" ABOVE FINISHED GRADE UNLESS SPECIFICALLY NOTED OTHERWISE ON DRAWINGS. MOUNT HOSE BIBBS 24" ABOVE FINISHED FLOOR UNLESS SPECIFICALLY NOTED OTHERWISE ON DRAWINGS.
- PROVIDE CLEANOUTS IN ACCORDANCE WITH ALL STATE AND LOCAL CODES. INSTALL CLEANOUT WITH COVER FLUSH TO FINISH SURFACE. PROVIDE WALL CLEANOUTS AT THE BASE OF EACH SANITARY AND STORM DRAIN STACK. WALL CLEANOUTS SHALL NOT BE LOCATED IN PUBLIC AREAS UNLESS SHOWN OTHERWISE ON DRAWINGS.
- COORDINATE EXACT FLOOR DRAIN LOCATIONS WITH ARCHITECTURAL DRAWINGS. SET FLOOR DRAINS BELOW FINISHED FLOOR TO ALLOW FOR FLOOR SLOPING TO THE DRAIN.
- COORDINATE PIPING WITH ALL ELECTRICAL EQUIPMENT (PANELS, TRANSFORMERS, ETC.) PRIOR TO ANY INSTALLATION. DO NOT ROUTE ANY PIPING OVER ANY ELECTRICAL PANELS UNDER ANY CIRCUMSTANCES. ANY PIPING RUN OVER PANELS SHALL BE RE-ROUTED AT NO ADDITIONAL COST.
- ALL WALL MOUNTED LAVATORIES SHALL BE ATTACHED TO FLOOR MOUNTED CARRIER DESIGNED TO WITHSTAND A VERTICAL LOAD OF 250 POUNDS ON THE FRONT OF THE FIXTURE.
- PROVIDE SANITARY WASTE, VENT, DOMESTIC WATER, ETC. ROUGH-IN AND MAKE FINAL CONNECTIONS (TO INCLUDE PROVIDING ALL NECESSARY RELATED STOPS, VALVES, TRAPS, ETC. AND MAKE READY FOR USE) TO ALL EQUIPMENT, WHETHER FURNISHED BY THIS CONTRACTOR OR FURNISHED BY OTHERS.
- PROVIDE CERTIFIED COPY OF MEDICAL GAS TEST REPORT AT FINAL A.H.C.A. INSPECTION.
- REFER TO ALL CONSULTANTS CONSTRUCTION DOCUMENTS INCLUDING FOOD SERVICE, MEDICAL EQUIPMENT AND INTERIOR DESIGN CONSULTANT AS ADDITIONAL PLUMBING REQUIREMENTS ARE CONTAINED WITHIN THEIR CONSTRUCTION DOCUMENTS. CONTRACTOR SHALL REFER TO ARCHITECTURAL DRAWINGS AND SPECIFICATIONS FOR ADA REQUIREMENTS.
- CONTRACTOR SHALL BE RESPONSIBLE FOR LOCATING AND VERIFYING ALL EXISTING UTILITIES BELOW GRADE PRIOR TO CONSTRUCTION. CONTRACTOR SHALL COORDINATE WITH THE UTILITY COMPANIES TO RELOCATE ANY EXISTING UTILITIES THAT MAY INTERFERE WITH THE PROPOSED CONSTRUCTION. CONTRACTOR SHALL CALL "FLORIDA ONE CALL" AT 1-800-SUN-SHINE 48 HOURS BEFORE DIGGING. CONTRACTOR SHALL COORDINATE WITH GEORGIA 811.
- SANITARY DRAINAGE PIPING IN KITCHENS SHALL BE SERVICE WEIGHT CAST-IRON PIPING AND FITTINGS UNLESS SPECIFICALLY NOTED OTHERWISE ON DRAWINGS.
- SANITARY DRAINAGE PIPING THAT RECEIVES HIGH TEMPERATURE WASTE (120 F OR GREATER) SHALL BE SERVICE WEIGHT CAST-IRON PIPING AND FITTINGS.
- DOUBLE COMBINATIONS, DOUBLE "Ys" AND SANITARY CROSSES SHALL NOT BE USED IN SANITARY OR STORM DRAINAGE SYSTEMS.
- MEDICAL GAS ALARM PANELS AND ZONE VALVE BOXES SHALL BE MOUNTED AT 50" ABOVE FINISHED FLOOR TO TOP OF PANEL. MEDICAL GAS OUTLETS SHALL BE MOUNTED AT 50" ABOVE FINISHED FLOOR TO TOP OF OUTLET. MOUNTING HEIGHTS SHOWN ON ARCHITECTURAL DRAWINGS OR ESTABLISHED MOUNTING HEIGHTS IN EXISTING FACILITY SHALL TAKE PRIORITY OVER THE HEIGHTS LISTED. REFER TO VENDOR DRAWINGS FOR MOUNTING HEIGHT OF HEADWALL SYSTEMS CONTAINING MEDICAL GAS OUTLETS.
- PROVIDE CHECK VALVES ON COLD AND HOT WATER SUPPLIES TO ALL MOP/SERVICE SINK FAUCETS, SENSOR FAUCETS, FOOT/KNEE OPERATED FAUCETS, 3-COMPARTMENT SINK FAUCETS, CART WASH SUPPLIES, CAN WASH SUPPLIES, HOSE REELS AND PRIOR TO ALL MIXING VALVES. REFER TO SPECIFICATIONS FOR CHECK VALVES

## GENERAL GRAVITY DEMOLITION NOTES

- EXISTING CONDITIONS SHOWN ON THIS DRAWING ARE TAKEN FROM ORIGINAL DRAWINGS. ALL EXISTING CONDITIONS MUST BE VERIFIED PRIOR TO DEMOLITION. FIELD CONDITIONS SHALL GOVERN. FIELD VERIFY LOCATIONS OF EXISTING PIPING BEFORE DEMOLITION. PROVIDE ALL REQUIRED DEMOLITION WHETHER SHOWN ON THE PLANS OR NOT. COORDINATE WITH THE ARCHITECTURAL DRAWING FOR ITEMS NOT INDICATED. COORDINATE DEMOLITION OF EXISTING PIPING WITH NEW WORK. PIPING CONNECTING TO AREAS OUTSIDE OF RENOVATED SPACE SHALL NOT TO BE DISCONNECTED UNTIL AFTER NEW PIPING IS INSTALLED. COORDINATE SYSTEM SHUT DOWNS WITH THE FACILITY PRIOR TO DEMOLITION.
- ALL ITEMS REMOVED UNDER THIS PROJECT SHALL BE TURNED OVER TO THE OWNER, OR DISPOSED OF AT THE OWNER'S DISCRETION.
- ALL VENT PIPING INDICATED ON THIS DRAWING IS LOCATED IN THE CEILING SPACE OR WALL SPACES UNLESS NOTED OTHERWISE. FIELD VERIFY BEFORE CONSTRUCTION.
- ALL SANITARY PIPING INDICATED ON THIS DRAWING IS LOCATED BELOW THE FLOOR SLAB OR WALLS CHASE UNLESS NOTED OTHERWISE. OFFSET ALL EXISTING SANITARY AND VENT RISERS FROM FLOOR ABOVE TO WALL ON NEW FLOOR PLAN. FIELD VERIFY EXACT LOCATION AND PROVIDE REQUIRED OFFSET TO FACILITATE OPERATION OF PLUMBING SYSTEMS TO THE FLOORS ABOVE AND BELOW.
- CARE MUST BE TAKEN WHEN REMOVING PIPE AROUND LOAD BEARING WALLS. THE WALL OR FOOTING BELOW IS NOT TO BE DESTROYED.
- EXISTING ROOF DRAINS AND RAIN WATER LEADER PIPING TO REMAIN UNLESS OTHERWISE NOTED. FIELD VERIFY ROUTING OF EXISTING PIPING BEFORE CONSTRUCTION BEGINS. EXISTING RAIN WATER PIPING LOCATED IN WALLS TO BE REMOVED SHALL BE REROUTED OVER HEAD TO A NEW WALL LOCATION AND RECONNECTED TO THE UNDERGROUND STORM.
- CUT AND PATCH CEILINGS, WALLS AND FLOOR SLAB AS REQUIRED TO FACILITATE PLUMBING RENOVATION. SEE ARCHITECTURAL DRAWINGS FOR PATCHING DETAILS.
- EXISTING BUILDING DRAINS UNDER CONCRETE SLABS AND EXISTING BUILDING SEWERS THAT SERVES THE SYSTEM SHALL BE INTERNALLY EXAMINED TO VERIFY THAT THE PIPING IS SLOPING IN THE CORRECT DIRECTION, IS NOT BROKEN, IS NOT OBSTRUCTED AND IS SIZED FOR THE DRAINAGE LOAD OF THE NEW PLUMBING DRAINAGE SYSTEM TO BE INSTALLED.

## GENERAL PRESSURE DEMOLITION NOTES

- EXISTING CONDITIONS SHOWN ON THIS DRAWING ARE TAKEN FROM ORIGINAL DRAWINGS. ALL EXISTING CONDITIONS MUST BE VERIFIED PRIOR TO DEMOLITION. FIELD CONDITIONS SHALL GOVERN. FIELD VERIFY LOCATIONS OF EXISTING PIPING BEFORE DEMOLITION. PROVIDE ALL REQUIRED DEMOLITION WHETHER SHOWN ON THE PLANS OR NOT. COORDINATE WITH THE ARCHITECTURAL DRAWING FOR ITEMS NOT INDICATED. COORDINATE DEMOLITION OF EXISTING PIPING WITH NEW WORK. PIPING CONNECTING TO AREAS OUTSIDE OF RENOVATED SPACE SHALL NOT TO BE DISCONNECTED UNTIL AFTER NEW PIPING IS INSTALLED. COORDINATE SYSTEM SHUT DOWNS WITH THE FACILITY PRIOR TO DEMOLITION.
- ALL ITEMS REMOVED UNDER THIS PROJECT SHALL BE DISPOSED OF OR TURNED OVER TO THE OWNER AT THE OWNER'S DISCRETION.
- ALL WATER PIPING INDICATED ON THIS DRAWING IS LOCATED IN THE CEILING SPACE OR WALL SPACES UNLESS NOTED OTHERWISE. FIELD VERIFY BEFORE CONSTRUCTION.
- CARE MUST BE TAKEN WHEN REMOVING PIPE AROUND LOAD BEARING WALLS. THE WALL OR FOOTING BELOW IS NOT TO BE DESTROYED.
- CUT AND PATCH CEILINGS, WALLS AND FLOOR SLAB AS REQUIRED TO FACILITATE PLUMBING RENOVATION. SEE ARCHITECTURAL DRAWINGS FOR PATCHING DETAILS.

## PLUMBING DRAWING INDEX

SHEET	DESCRIPTION
P0.01	PLUMBING SYMBOLS, LEGEND, NOTES AND INDEX
P0.02	PLUMBING SCHEDULES AND DETAILS
P1.01	SECOND FLOOR DEMOLITION GRAVITY PIPING DEMOLITION PLAN
P1.02	SECOND FLOOR DEMOLITION PRESSURE PIPING DEMOLITION PLAN
P2.01	SECOND FLOOR CONSTRUCTION GRAVITY PIPING PLAN
P2.02	SECOND FLOOR CONSTRUCTION PRESSURE PIPING PLAN
P3.01	SECOND FLOOR CONSTRUCTION ENLARGED PLANS

## PLUMBING ABBREVIATIONS

SYMBOL	DESCRIPTION
CA	- COMPRESSED AIR
AFF	- ABOVE FINISH FLOOR
AW	- ACID WASTE
AV	- ACID VENT
CB	- CATCH BASIN
CD	- CONDENSATE DRAIN
CFH	- CUBIC FEET PER HOUR
CO	- CLEANOUT
CONT	- CONTINUATION
CW	- DOMESTIC COLD WATER
X-CW	- EXISTING COLD WATER
DI	- DEIONIZED WATER
DN	- DENTAL VACUUM
DS	- DOMESTIC COLD WATER
DWV	- DOMESTIC HOT WATER
EXIST	- EXISTING
F	- DEGREE FAHRENHEIT
FCO	- FLOOR CLEANOUT
FD	- FLOOR DRAIN
FOF	- FUEL OIL FILL
FOG	- FUEL OIL GAGE
FOR	- FUEL OIL RETURN
FOS	- FUEL OIL SUPPLY
FOV	- FUEL OIL VENT
G	- GAS
GPH	- GALLONS PER HOUR
GPM	- GALLONS PER MINUTE
GR	- KITCHEN WASTE (GREASE)
HB	- HOSE BIBB
HD	- HUB DRAIN
HW	- DOMESTIC HOT WATER
X-HW	- EXISTING DOMESTIC HOT WATER
HWR	- DOMESTIC HOT WATER RECIRCULATING
X-HWR	- EXISTING DOMESTIC HOT WATER RECIRCULATING
IE	- INVERT ELEVATION
IW	- INDIRECT WASTE
KW	- KILOWATT
LBS	- POUNDS
MA OR A	- MEDICAL AIR
MV OR V	- MEDICAL VACUUM
MH	- MANHOLE
NI OR N	- NITROGEN
N2O	- NITROUS OXIDE
NC	- NORMALLY CLOSED
NIC	- NOT IN CONTRACT
NO	- NORMALLY OPEN
NP	- NON-POTABLE WATER
NTS	- NOT TO SCALE
OD	- OUTSIDE DIAMETER
OX OR O	- OXYGEN
PRV	- PRESSURE REDUCING VALVE
PSI	- POUNDS PER SQUARE INCH
PVC	- POLYVINYL CHLORIDE PIPE
RD	- ROOF DRAIN
RFBP	- REDUCED PRESSURE BACKFLOW PREVENTER
SAN	- SANITARY
X-S	- EXISTING SANITARY
SD	- STORM DRAIN
SF	- SQUARE FEET
SH	- SHEET
ST	- STORM
STO	- OVERFLOW STORM DRAIN
SW	- SOFT COLD WATER
V	- VENT
X-V	- EXISTING VENT
VAC	- VACUUM
VC	- VACUUM CLEANING
VTR	- VENT THRU ROOF
WCO	- WALL CLEANOUT
WTR	- WATER

## APPLICABLE CODES AND STANDARDS

ALL WORK CONTAINED WITHIN THESE DOCUMENTS SHALL BE IN FULL COMPLIANCE WITH ALL FEDERAL, STATE AND LOCAL CODES AND STANDARDS INCLUDING, BUT NOT LIMITED TO THE FOLLOWING.

- INTERNATIONAL BUILDING CODE, 2018 EDITION, WITH GEORGIA AMENDMENTS (2020)
- INTERNATIONAL RESIDENTIAL CODE, 2018 EDITION, WITH GEORGIA AMENDMENTS (2020)
- INTERNATIONAL FIRE CODE, 2018 EDITION, WITH GEORGIA AMENDMENTS (2020)
- INTERNATIONAL PLUMBING CODE, 2018 EDITION, WITH GEORGIA AMENDMENTS (2020)
- INTERNATIONAL MECHANICAL CODE, 2018 EDITION, WITH GEORGIA AMENDMENTS (2020)
- INTERNATIONAL FUEL GAS CODE 2018 EDITION, WITH GEORGIA AMENDMENTS (2020)
- INTERNATIONAL ENERGY CODE, 2015 EDITION, WITH GEORGIA SUPPLEMENTS AND AMENDMENTS (2020)
- NATIONAL FIRE PROTECTION ASSOCIATION (NFPA) 101, LIFE SAFETY CODE, 2018 EDITION WITH STATE AMENDMENTS (2020)
- NATIONAL ELECTRICAL CODE, 2017 EDITION

## PLUMBING SYMBOL LEGEND

SYMBOL	DESCRIPTION
	- COMPRESSED AIR
	- ACID VENT
	- ACID WASTE
	- BELOW GROUND ACID WASTE
	- ABOVE GROUND CONDENSATE DRAIN
	- BELOW GROUND CONDENSATE DRAIN
	- DENTAL AIR
	- DEIONIZED WATER
	- DENTAL VACUUM
	- DOMESTIC COLD WATER
	- DOMESTIC HOT WATER
	- DOMESTIC HOT WATER RETURN
	- FUEL OIL FILL
	- FUEL OIL GAGE
	- FUEL OIL RETURN
	- FUEL OIL SUPPLY
	- FUEL OIL VENT
	- GAS
	- KITCHEN WASTE (GREASE)
	- MEDICAL COMPRESSED AIR
	- MEDICAL VACUUM
	- NITROGEN
	- NITROUS OXIDE
	- OXYGEN
	- ABOVE GROUND SANITARY
	- BELOW GROUND SANITARY
	- SANITARY VENT
	- ABOVE GROUND STORM
	- BELOW GROUND STORM
	- OVERFLOW STORM DRAIN
	- BELOW GROUND OVERFLOW STORM
	- NITROUS OXIDE
	- NORMALLY CLOSED
	- NOT IN CONTRACT
	- NORMALLY OPEN
	- NON-POTABLE WATER
	- NOT TO SCALE
	- OUTSIDE DIAMETER
	- OXYGEN
	- PRESSURE REDUCING VALVE
	- POUNDS PER SQUARE INCH
	- POLYVINYL CHLORIDE PIPE
	- ROOF DRAIN
	- REDUCED PRESSURE BACKFLOW PREVENTER
	- SANITARY
	- EXISTING SANITARY
	- STORM DRAIN
	- SQUARE FEET
	- SHEET
	- STORM
	- OVERFLOW STORM DRAIN
	- SOFT COLD WATER
	- VENT
	- EXISTING VENT
	- VACUUM
	- VACUUM CLEANING
	- VENT THRU ROOF
	- WALL CLEANOUT
	- WATER
	- HOSE BIBB OR WALL HYDRANT
	- CLEAN OUT PLUG
	- WALL CLEANOUT
	- FLOOR CLEAN OUT
	- FLOOR DRAIN
	- ROOF DRAIN
	- FLOOR SINK
	- SHUT-OFF VALVE IN VALVE BOX
	- SHUTOFF VALVE
	- BALL VALVE
	- CALIBRATED BALANCING VALVE
	- CHECK VALVE (SWING)
	- PRESSURE REDUCING VALVE
	- SOLENOID OPERATED VALVE
	- REDUCED PRESSURE BACKFLOW PREVENTER
	- RELIEF OR SAFETY VALVE
	- GAS COCK
	- GAS PRESSURE REGULATOR
	- SHUTOFF VALVE ON RISER
	- GAS COCK ON RISER
	- CONNECTION, TOP
	- CONNECTION, BOTTOM
	- ELBOW, TURNED DOWN
	- ELBOW, TURNED UP
	- TEE, TURNED UP
	- TEE, TURNED DOWN
	- CAP
	- DIRECTION OF FLOW
	- ALARM PANEL
	- MASTER ALARM PANEL
	- MEDICAL GAS OUTLET
	- MEDICAL GAS VALVE BOX
	- CONNECT TO EXISTING
	- DEMOLISH TO POINT INDICATED
	- REVISION REFERENCE
	- DETAIL REFERENCE: TOP-DETAIL#, BOTTOM-DRAWING# SHOWN ON

NOTE: SOME SYMBOLS SHOWN ON THIS LEGEND MAY NOT PERTAIN TO THIS PROJECT

## PLUMBING SPECIFICATIONS

- GENERAL PROVISIONS**
- PROVIDE ALL LABOR, MATERIAL AND EQUIPMENT FOR A COMPLETE AND PROPERLY OPERATING PLUMBING SYSTEM.
- CODES AND STANDARDS: ALL PLUMBING WORK SHALL BE IN STRICT COMPLIANCE WITH THE 2017 FLORIDA PLUMBING CODE AND ALL LOCAL CODES HAVING JURISDICTION.
- ALL PLUMBING WORK SHALL BE DONE IN A NEAT AND WORKMANLIKE MANNER. CONTRACTOR SHALL SECURE AND PAY FOR ALL PERMITS AND FEES, ETC., REQUIRED FOR THE EXECUTION OF THIS WORK.
- CONTRACTOR SHALL COORDINATE HIS WORK WITH ALL OTHER TRADES BEFORE FABRICATION OR INSTALLATION. OFFSETS AND/OR TRANSITIONS REQUIRED SHALL BE PROVIDED WITHOUT ADDITIONAL COST. CONTRACTOR SHALL COORDINATE AND INSTALL HIS WORK IN A TIMELY MANNER TO PREVENT DELAYS IN THE CONSTRUCTION.
- CONTRACTOR SHALL BE RESPONSIBLE TO REPAIR OR REPLACE DAMAGED EQUIPMENT AND/OR MATERIAL.
- PROVIDE ALL MATERIALS REQUIRED TO PROPERLY SUPPORT ALL PIPING AND EQUIPMENT. PIPE HANGERS SHALL BE ADJUSTABLE TYPE AND BE SPACED IN ACCORDANCE WITH THE FLORIDA PLUMBING CODE. PROVIDED PLASTIC COATED RING ON HANGERS FOR COPPER PIPING TO PROVIDE DIELECTRIC ISOLATION.
- PROVIDE DIELECTRIC UNIONS OR FLANGES BETWEEN COPPER AND STEEL PIPING AND BETWEEN BRASSWARE AND STEEL. DO NOT USE STEEL AND COPPER PIPING IN THE SAME SYSTEM WITHOUT SUCH ISOLATION.
- PROVIDE REDUCING FITTINGS (REDUCING BUSHINGS SHALL NOT BE USED WHERE CHANGES IN PIPE SIZES OCCUR.
- THIS CONTRACTOR SHALL SUPPLY AND INSTALL ALL SERVICES THROUGHOUT THE BUILDING AND MAKE CONNECTION TO SITE UTILITIES APPROXIMATELY 5' OUTSIDE THE BUILDING. CONTRACTOR SHALL SUPPLY AND INSTALL FIXTURES, FITTINGS, VALVING AND TRIM AND MAKE READY FOR USE ALL FIXTURES, EQUIPMENT, ETC.
- SEE ARCHITECTURAL DRAWINGS FOR FIXTURE LOCATIONS AND MOUNTING HEIGHTS.

### 2.00 - BASIC MATERIALS AND METHODS

- DOMESTIC WATER - ABOVEGROUND WATER PIPE AND FITTINGS - TYPE "L" COPPER.
- PROVIDE UNIONS OR FLANGES IN ALL DOMESTIC WATER SERVICE LINES AT EACH PIECE OF EQUIPMENT, SPECIALTY VALVES OR AT OTHER LOCATIONS REQUIRED FOR READY DISCONNECT.
- WATER HAMMER ARRESTORS SHALL BE INSTALLED AT THE LOCATIONS ON THE PLANS AND IN ACCORDANCE WITH PDI STANDARD VHS-201. PRODUCTS SHALL BE EQUAL TO THOSE MANUFACTURED BY PRECISION PLUMBING PRODUCTS OR SIOUX CHIEF.
- VALVES: PROVIDE VALVES TO ISOLATE EACH RISER, BRANCH LINE AND PIECE OF EQUIPMENT.
- PROVIDE PRESSURE REDUCING VALVE AND AIR GAP CONNECTION AT DISHWASHER AS REQUIRED BY CODE AND ACCORDING TO MANUFACTURER.
- PROVIDE INLINE WATER FILTER AT COFFEE MAKER AND ICE MAKER TO REMOVE MATERIALS, TASTE AND ODOR - "EVERPURE OR "SYSTEMS IV".
- SANITARY WASTE (NON-PRESSURE), SANITARY VENT AND STORM PIPING - ABOVE GROUND - NO-HUB CAST IRON SOIL PIPE AND FITTINGS PER CISPI 301 WITH HEAVY DUTY SHIELDED STAINLESS STEEL COUPLINGS.
- CONDENSATE PIPING - DWV COPPER OR NO-HUB CAST IRON SOIL PIPE AND FITTINGS PER CISPI 301 WITH HEAVY DUTY SHIELDED STAINLESS STEEL COUPLINGS.
- INSTALL GRAVITY LINES SLOPED AT 1/8" PER FOOT FOR PIPE 2" AND LARGER AND 1/4" PER FOOT FOR PIPE SMALLER THAN 2". VERIFY INVERT ELEVATION WITH EXISTING PIPING PRIOR TO ANY PIPE BEING INSTALLED.
- PROVIDE AND PROPERLY LOCATE HANGERS TO ADEQUATELY SUPPORT PIPING. ARRANGE HANGERS TO PERMIT EXPANSION AND CONTRACTION. DO NOT HANG PIPING FROM FIRE OR SMOKE WALLS. PROVIDE PIPE HANGERS AT EACH VALVE, STRAINER, AND OTHER PIPING ACCESSORY, AND AT EACH CHANGE OR DIRECTION.
- THE SIZE OF HANGERS FOR NON-INSULATED PIPES SHALL BE SUITABLE FOR THE PIPE SIZE TO BE SUPPORTED. FOR INSULATED PIPING, THE SIZE OF THE HANGER SHALL BE SUITABLE FOR THE PIPE SIZE, PLUS THE INSULATION AND INSULATION SHIELD.
- SPACING: LOCATE PIPE SUPPORTS AS INDICATED IN THE FOLLOWING TABLE:

HORIZONTAL PIPE HANGER SCHEDULE		
MATERIAL	PIPE SIZE	HANGER SPACING
COPPER TUBING	UP TO 1 1/4 INCH	6 FOOT CENTERS
	1 1/2 INCH AND ABOVE	10 FOOT CENTERS
CAST IRON PIPE	ALL	5 FOOT CENTERS

### 3.00 - PLUMBING FIXTURES AND TRIM

- ALL PLUMBING FIXTURES SHALL BE "FIRST QUALITY" AS DEFINED AND SET FORTH IN COMMERCIAL STANDARD CS77-28 AS PROMULGATED BY THE U.S. DEPARTMENT OF COMMERCE.
- ALL FIXTURES ARE TO BE WHITE VITREOUS CHINA UNLESS OTHERWISE SPECIFICALLY NOTED. FIXTURES AND FITTINGS PROPOSED SHALL BE FROM ONE MANUFACTURER AND OF SIMILAR CHARACTER IN ANY ROOM OR LOCATION. ESCUTCHEONS, HANDLES, ETC., ON THE DIFFERENT FIXTURES SHALL BE OF THE SAME DESIGN.
- PROVIDE FIXTURE CARRIERS AS RECOMMENDED BY FIXTURE MANUFACTURER AND/OR CONSTRUCTION METHOD.
- PROVIDE ACCESS PANELS TO ALL VALVES WITHIN CHASES OR ABOVE NON-ACCESSIBLE CEILINGS. REFER TO ARCHITECTURAL DRAWINGS FOR CEILING TYPES.
- FLOOR DRAIN TRAP SEALS SHALL HAVE AN APPROVED PRIMING DEVICE DESIGNED FOR THAT PURPOSE.
- ALL CONCEALED TRAPS, PRIMERS, VALVES, CLEANOUTS, ETC. LOCATED IN TILED AREAS SHALL BE PROVIDED WITH AN ACCESS PANEL.

### 4.00 - INSULATION

- ABOVE GROUND COLD AND HOT WATER PIPING - FIBERGLASS, 1" THICKNESS, ASJ JACKET, DOUBLE SEALING LAP JOINT, 0.24 K AT 75° F. INSULATION AND ADHESIVES INSTALLED IN RETURN AIR PLENUMS SHALL HAVE A MAXIMUM FLAME SPREAD RATING OF 25 AND A MAXIMUM SMOKE DEVELOPED RATING OF 50.
- ABOVE GROUND STORM PIPING - FIBERGLASS, 1/2" THICKNESS, ASJ JACKET, DOUBLE SEALING LAP JOINT, 0.24 K AT 75° F. INSULATION AND ADHESIVES INSTALLED IN RETURN AIR PLENUMS SHALL HAVE A MAXIMUM FLAME SPREAD RATING OF 25 AND A MAXIMUM SMOKE DEVELOPED RATING OF 50.
- ABOVEGROUND CONDENSATE PIPING SHALL BE 1/2" FLEXIBLE INCELLULAR POLYOLEFIN FOAM AND SHALL HAVE A MAXIMUM FLAME SPREAD RATING OF 25 AND A MAXIMUM SMOKE DEVELOPED RATING OF 35-MCDA "MICROLOCK".

### 5.00 - VALVES AND COCKS

- VALVES 2" AND SMALLER SHALL BE BALL VALVES, 150 PSI SWP, 400 PSI WOG, STANDARD PORT BALL, BRONZE TRIM, CAST BRONZE BODY, CHROMIUM PLATED BRASS BALL, BRONZE NON-BLOWOUT STEM, TEFLON SEAT, DOUBLE O-RING STEM SEALS, ZINC-COATED STEEL HANDLE WITH PLASTIC COATED HAND GRIP, 90 DEGREE OPERATION FROM FULL OPEN TO TIGHT SHUT-OFF - STOCKHAM S214-BR-T1, STOCKHAM S216-BR-T-S OR EQUAL.
- CHECK VALVES, ROUGH BRASS, REGRINDING BRONZE DISC - STOCKHAM B-345; B-309 OR EQUAL.

### 6.00 - STERILIZATION

- DOMESTIC WATER PIPING SHALL BE THOROUGHLY FLUSHED OUT AND STERILIZED IN ACCORDANCE WITH THE FLORIDA PLUMBING CODE.

## PLUMBING FIXTURE SCHEDULE

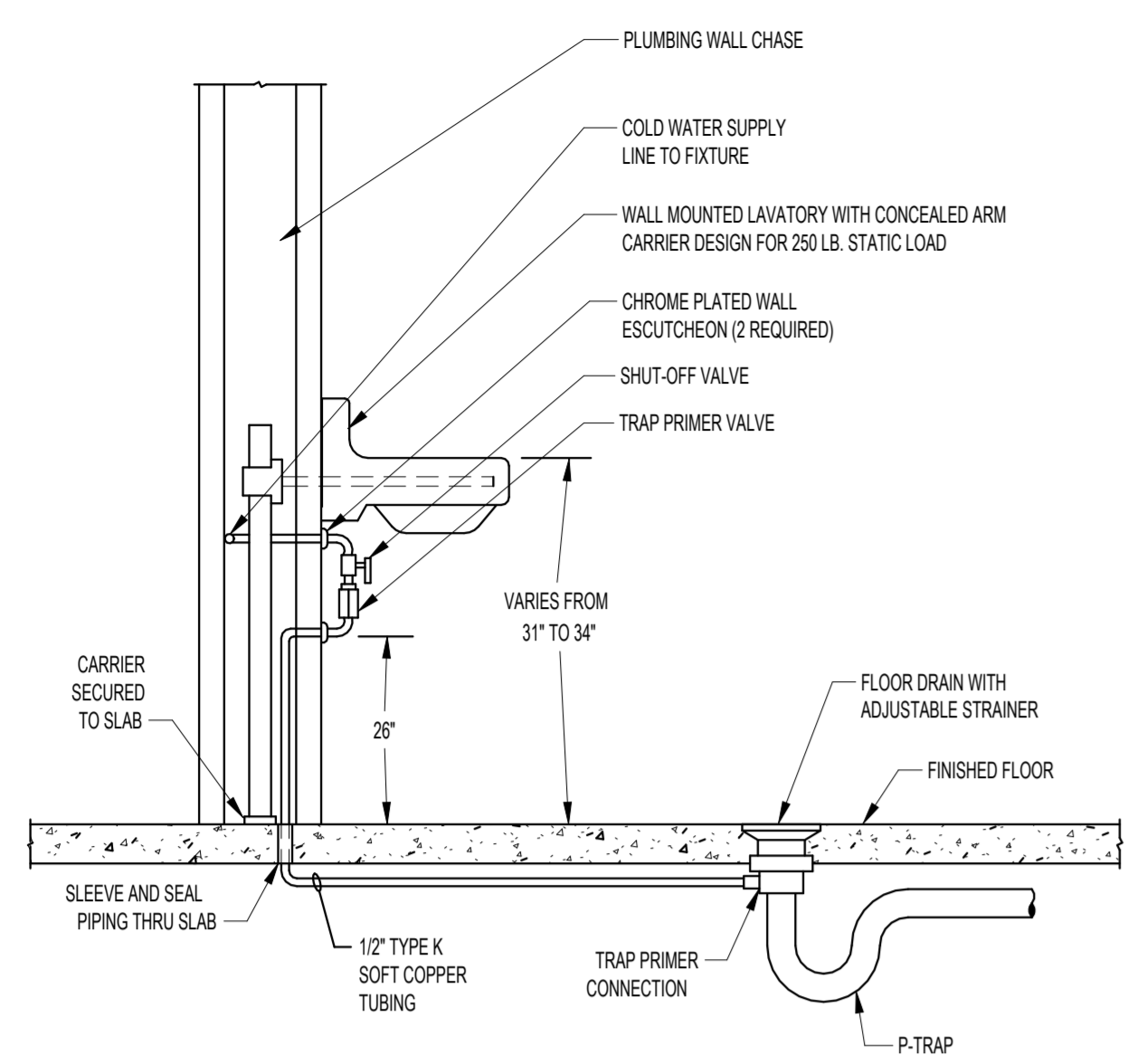
MARK	TYPE	FIXTURE		TRIM		FLOW RATE / FLUSH RATE / FLOW CYCLE	DESCRIPTION/SPECIFICATIONS
		MANUFACTURER	MODEL	MANUFACTURER	MODEL		
WC-1	WATER CLOSET	AMERICAN STANDARD	2257.101	AMERICAN STANDARD	606B161.002	1.28 GPF	VITREOUS CHINA, 1.28 GALLON, FLOOR MOUNTED, SIPHON JET, ELONGATED CLOSET BOWL WITH 1-1/2" TOP SPUD, BOLT CAPS, FULLY GLAZED TRAPWAY, WITH RIM OF FIXTURE AT 15" AFF.
WC-2	WATER CLOSET - ACCESSIBLE	AMERICAN STANDARD	2257.101	AMERICAN STANDARD	606B161.002	1.28 GPF	VITREOUS CHINA, 1.28 GALLON FLOOR MOUNTED, DIRECT-FED SIPHON JET, ELONGATED CLOSET BOWL WITH 1-1/2" TOP SPUD, FULLY GLAZED TRAPWAY, BOLT CAPS WITH RIM OF FIXTURE 16.5" A.F.F.
U-1	URINAL (ACCESSIBLE)	AMERICAN STANDARD	6590.525	SLOAN	8196-0.125	0.125 GPF	WALL HUNG VITREOUS CHINA, 1.25 GPF, SIPHON JET URINAL WITH INTEGRAL FLUSHING RIM, INTEGRAL TRAP, 2" FEMALE FLANGED OUTLET CONNECTION, TOP OF RIM MOUNTED 17" AFF.
L-1	LAVATORY	INTEGRAL	INTEGRAL	CHICAGO FAUCET	116.430.AB.1	1.5 GPM	LAVATORY BOWL PROVIDED AS INTEGRAL PART OF COUNTERTOP BY ARCHITECTURAL, COORDINATE DRAIN CONNECTION AND FAUCET HOLE INSTALLATION.

NOTES:

- WATER CLOSET HARDWARE:**  
TOILET SEAT - BEIMS No. 165555, EXTRA HEAVY SOLID PLASTIC WITH STAINLESS STEEL SELF SUSTAINING CHECK HINGE, OPEN FRONT WITHOUT COVER.  
FIXTURE CARRIER - WATTS ISCA-102-LR, EXTRA-HEAVY DUTY (1,000 lbs) BARIATRIC CARRIER COMPLIANT WITH ASME A112.6.1M, SINGLE VERTICAL THIN WALL WATER CLOSET CARRIER WITH EPOXY COATED CAST IRON FITTING, NO HUB WASTE (3"), AND VENT (2") CONNECTIONS. EPOXY COATED CAST IRON PATENTED COMPRESSION SEAL FACE PLATE ASSEMBLY, EPOXY COATED CAST IRON FOOT SUPPORTS ADJUSTABLE FOR STANDARD AND WHEELCHAIR HEIGHT, ADJUSTABLE ABS NIPPLE WITH INTEGRAL TEST CAP AND NEOPRANE BOWL GASKET, PLATED HARDWARE AND CHROME CAP NUTS.
- LAVATORY HARDWARE:**  
STRAINER/TRAP - McGuire No. 155A8902, CHROME PLATED STRAINER, CAST GRID STRAINER WITH 1-1/4" TAILPIECE, PLATED 17 GAUGE 1-1/4" X 1-1/2" BRASS P-TRAP WITH CLEANOUT. (ADA DEPTH SINKS SHALL HAVE OFFSET TAILPIECES McGuire No. 155WC8902).  
SUPPLIES - McGuire No. 2165CC, 1/2" COMPRESSION X 3/8" COMPRESSION CHROME PLATED ANGLE SUPPLY STOPS WITH CHROME PLATED 12" FLEXIBLE RISERS AND ESCUTCHEONS.  
INSULATION KIT - EXPOSED SUPPLIES AND TRAPS ARE TO BE PROTECTED WITH INSULATION KITS EQUAL TO PLUMBEREX No. 4333.  
FIXTURE CARRIER - WATTS No. WCA-411, CONCEALED ARMS FLOOR MOUNTED CARRIER COATED STEEL UPRIGHTS WITH WELDED FEET, CAST IRON ADJUSTABLE HEADERS, STEEL SLEEVES, ALIGNMENT TRUSS AND FASTENERS.
- SINK HARDWARE:**  
TRAP - McGuire No. 8912, CHROME PLATED 17 GAUGE 1-1/2" X 1-1/2" BRASS P-TRAP WITH CLEANOUT. (ADA DEPTH SINKS SHALL HAVE OFFSET TAILPIECES McGuire No. 155WC8902).  
SUPPLIES - McGuire No. 2165CC, 1/2" COMPRESSION X 3/8" COMPRESSION CHROME PLATED ANGLE SUPPLY STOPS WITH CHROME PLATED 12" FLEXIBLE RISERS AND ESCUTCHEONS.
- MOP SINK HARDWARE:**  
HOSE AND WALL HOOK - STERN WILLIAMS No. T-35, 36" LONG HOSE AND STAINLESS STEEL WALL BRACKET.
- ELECTRIC WATER COOLER / DRINKING FOUNTAIN HARDWARE:**  
FIXTURE CARRIER - WATTS No. CA-431-1, FLOOR MOUNTED BI-LEVEL WATER COOLER CARRIER WITH HEAVY GAUGE STEEL UPRIGHTS WITH INTEGRAL WELDED FEET, UNIVERSAL STEEL HANGER SUPPORT PLATE, AND PLATED HARDWARE.
- URINAL HARDWARE:**  
FIXTURE CARRIER - WATTS No. CA-321, FULLY ADJUSTABLE URINAL CARRIER WITH HEAVY GAUGE STEEL OFFSET UPRIGHTS, ADJUSTED TO ACCESSIBLE HEIGHT.

## SANITARY DRAIN SCHEDULE

MARK	DESCRIPTION	MANUFACTURER	MODEL	SPECIFICATION
FD-1	FLOOR DRAIN (6" SQUARE NICKEL BRONZE STRAINER - CAST IRON BODY)	ZURN	Z-415-P-6" X 6" TOP-VP	COATED CAST IRON BODY WITH BOTTOM OUTLET, COMBINATION INVERTIBLE MEMBRANE CLAMP AND ADJUSTABLE TYPE "S" NICKEL BRONZE STRAINER, 6" SQUARE TOP, TAPPED FOR TRAP PRIMER CONNECTION, VANDAL PROOF.



**TRAP PRIMER**  
No Scale

**1**

SEALS

REVISIONS

OWNER + LOCATION  
GRADY HEALTH  
80 JESSE HILL JR DRIVE

PROJECT  
**CAFETERIA RENOVATION**

PHASE  
**PROGRESS BID SET**

DATE **11/26/2024** JOB NUMBER **24.0128**

SHEET NAME  
**SECOND FLOOR  
DEMOLITION GRAVITY  
PIPING DEMOLITION PLAN**

SHEET NUMBER  
**P1.01**



11/26/2024 12:49:00 PM C:\Users\matt.mason\Documents\624196\_Grady Cafeteria Redesign\_MEP\_R24\_matt.mason\FK\M.rvt

DYER BROWN & ASSOCIATES, INC.



# DYER BROWN

DYER BROWN & ASSOCIATES INC.  
1 WINTHROP SQ  
BOSTON MA 02110-1209  
WWW.DYERBROWN.COM  
T 617 426 1680

SEALS

REVISIONS

OWNER + LOCATION  
GRADY HEALTH  
80 JESSE HILL JR DRIVE

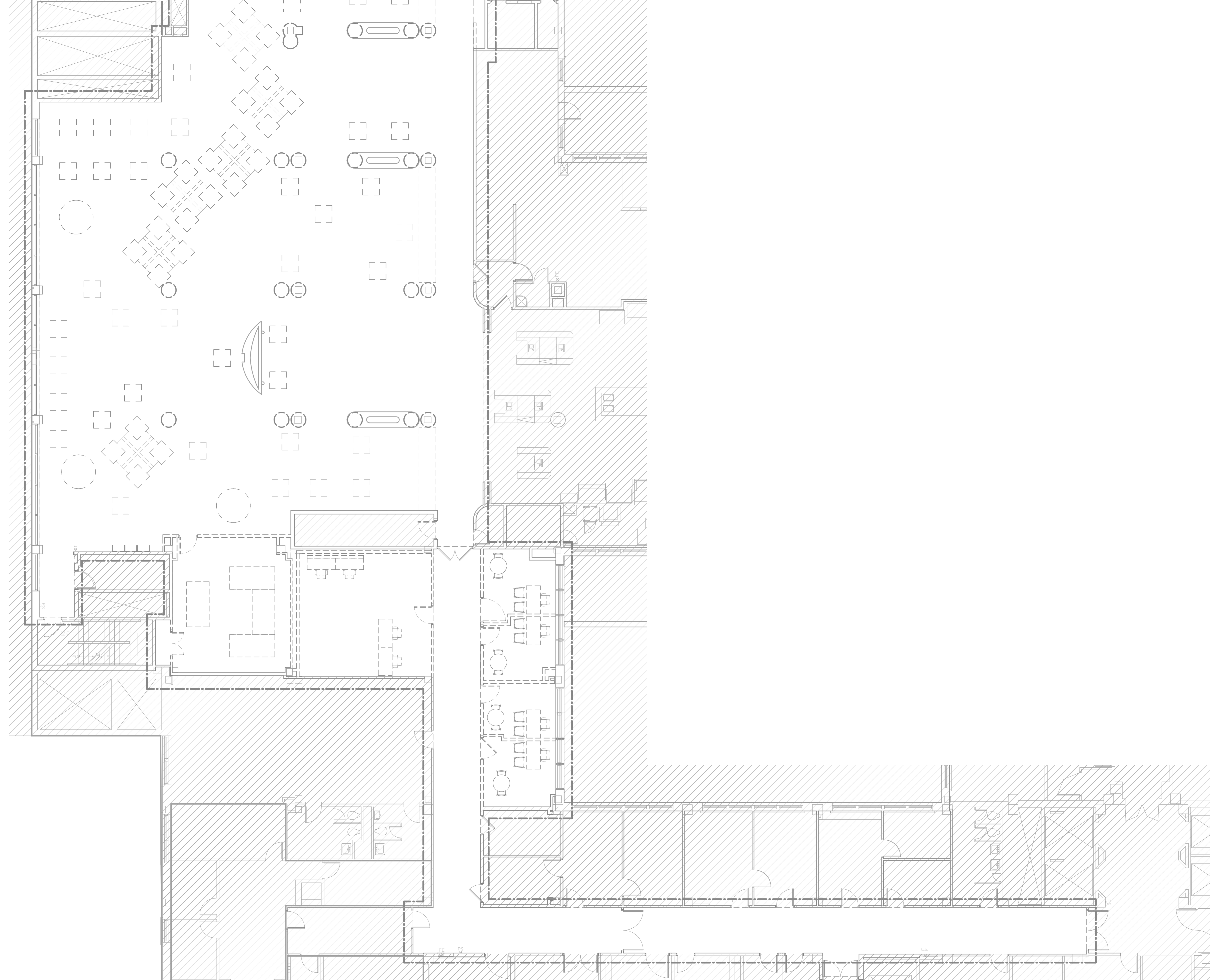
PROJECT  
**CAFETERIA RENOVATION**

PHASE  
**PROGRESS BID SET**

DATE **11/26/2024** JOB NUMBER **24.0128**

SHEET NAME  
**SECOND FLOOR  
DEMOLITION PRESSURE  
PIPING DEMOLITION PLAN**

SHEET NUMBER  
**P1.02**



1 SECOND FLOOR DEMOLITION PRESSURE PIPING DEMOLITION PLAN  
1/8" = 1'-0"

# DYER BROWN

DYER BROWN & ASSOCIATES INC.  
 1 WINTHROP SQ  
 BOSTON MA 02110-1209  
 WWW.DYERBROWN.COM  
 T 617 426 1680

SEALS

REVISIONS

OWNER + LOCATION  
 GRADY HEALTH  
 80 JESSE HILL JR DRIVE

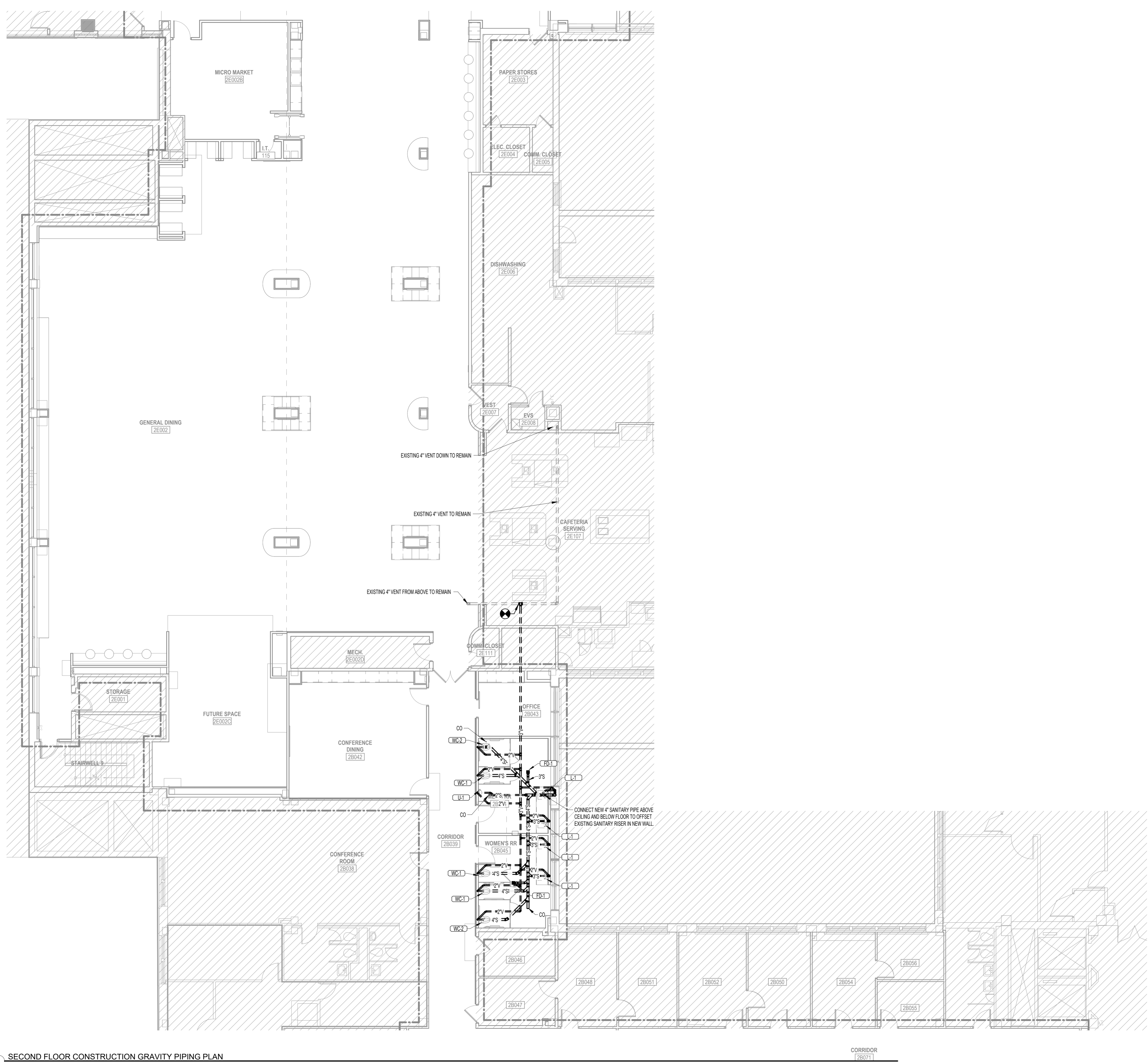
PROJECT  
**CAFETERIA RENOVATION**

PHASE  
**PROGRESS BID SET**

DATE **11/26/2024** JOB NUMBER **24.0128**

SHEET NAME  
**SECOND FLOOR  
 CONSTRUCTION GRAVITY  
 PIPING PLAN**

SHEET NUMBER  
**P2.01**



11/26/2024 12:49:07 PM C:\Users\matt.mason\Documents\624196\_Grady Cafeteria Redesign\_MEP\_R24\_matt.mason\FKMM.rvt

DYER BROWN & ASSOCIATES, INC.

1 SECOND FLOOR CONSTRUCTION GRAVITY PIPING PLAN  
 1/8" = 1'-0"

**TLC ENGINEERING SOLUTIONS**  
 4360 Chamblee Dunwoody Rd.  
 Suite 210  
 Atlanta, GA 30341  
 P 770.451.6757  
 www.tlcengineers.com  
 TLC No. 624196  
 © copyright 2022  
 COA 15

DYER BROWN & ASSOCIATES, INC. \ \ ALL RIGHTS RESERVED  
 Note: This drawing has been prepared by Dyer Brown & Associates, Inc., based on information provided by others. This drawing may or may not represent actual existing conditions. Base building configurations and tenant spaces must be field measured prior to any redesign or modification.

# DYER BROWN

DYER BROWN & ASSOCIATES INC.  
 1 WINTHROP SQ  
 BOSTON MA 02110-1209  
 WWW.DYERBROWN.COM  
 T 617 426 1680

SEALS

REVISIONS

OWNER + LOCATION  
 GRADY HEALTH  
 80 JESSE HILL JR DRIVE

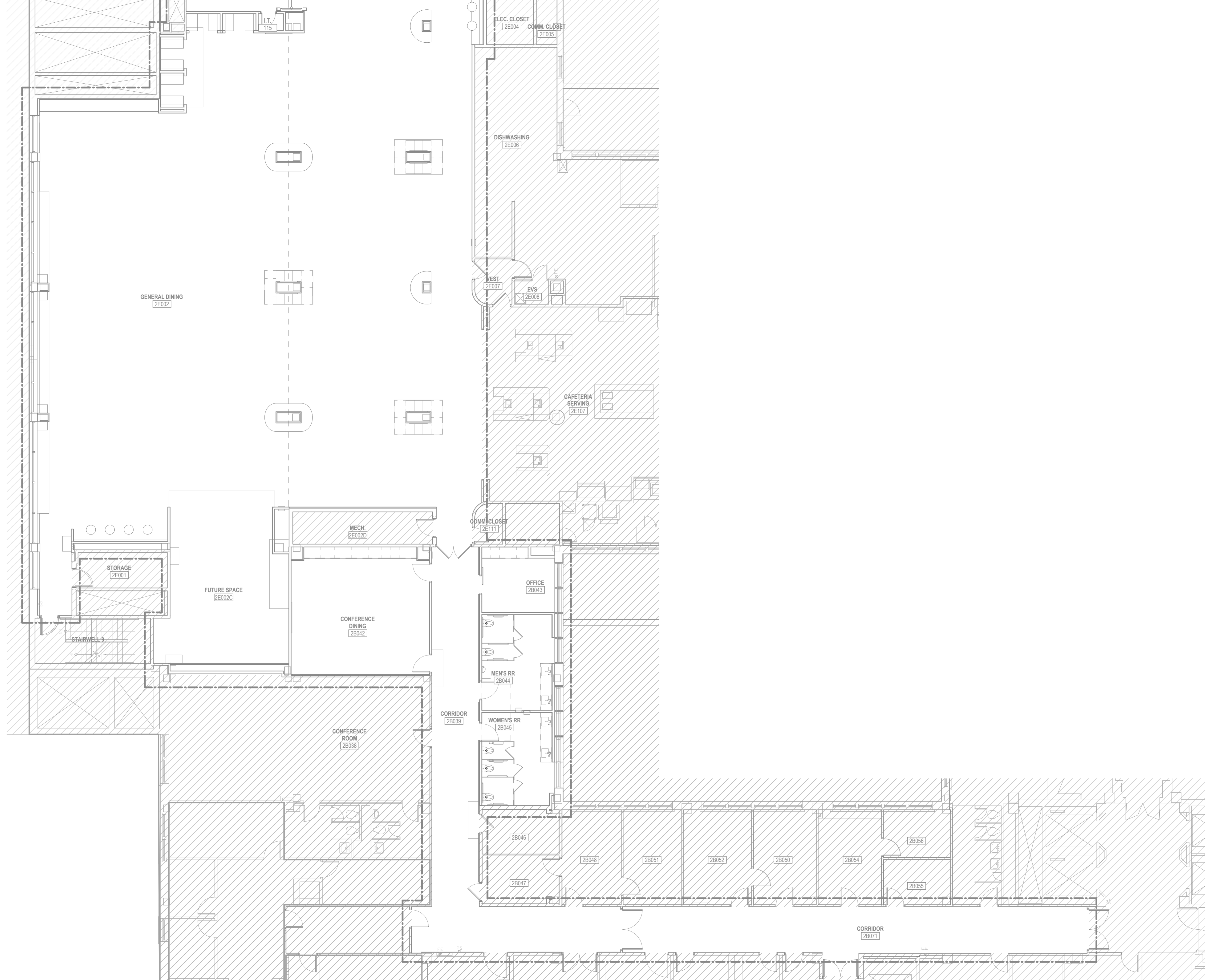
PROJECT  
**CAFETERIA RENOVATION**

PHASE  
**PROGRESS BID SET**

DATE **11/26/2024** JOB NUMBER **24.0128**

SHEET NAME  
**SECOND FLOOR  
 CONSTRUCTION  
 PRESSURE PIPING PLAN**

SHEET NUMBER  
**P2.02**



11/26/2024 12:49:09 PM C:\Users\matt.mason\Documents\624196\_Grady Cafeteria Redesign\_MEP\_R24\_matt.mason\FK\NM.rvt

DYER BROWN & ASSOCIATES, INC.

1 SECOND FLOOR CONSTRUCTION PRESSURE PIPING PLAN  
 1/8" = 1'-0"

**TLC ENGINEERING SOLUTIONS**  
 4360 Chamblee Dunwoody Rd.  
 Suite 210  
 Atlanta, GA 30341  
 P 770.451.6757  
 www.tlcengineers.com  
 TLC No. 624196  
 COA 15  
 © copyright 2022  
 THINK. LISTEN. CREATE.

DYER BROWN & ASSOCIATES, INC. \ \ ALL RIGHTS RESERVED  
 Note: This drawing has been prepared by Dyer Brown & Associates, Inc., based on information provided by others. This drawing may or may not represent actual existing conditions. Base building configurations and tenant spaces must be field measured prior to any redesign or modification.

SEALS

REVISIONS

OWNER + LOCATION  
 GRADY HEALTH  
 80 JESSE HILL JR DRIVE

PROJECT  
**CAFETERIA RENOVATION**

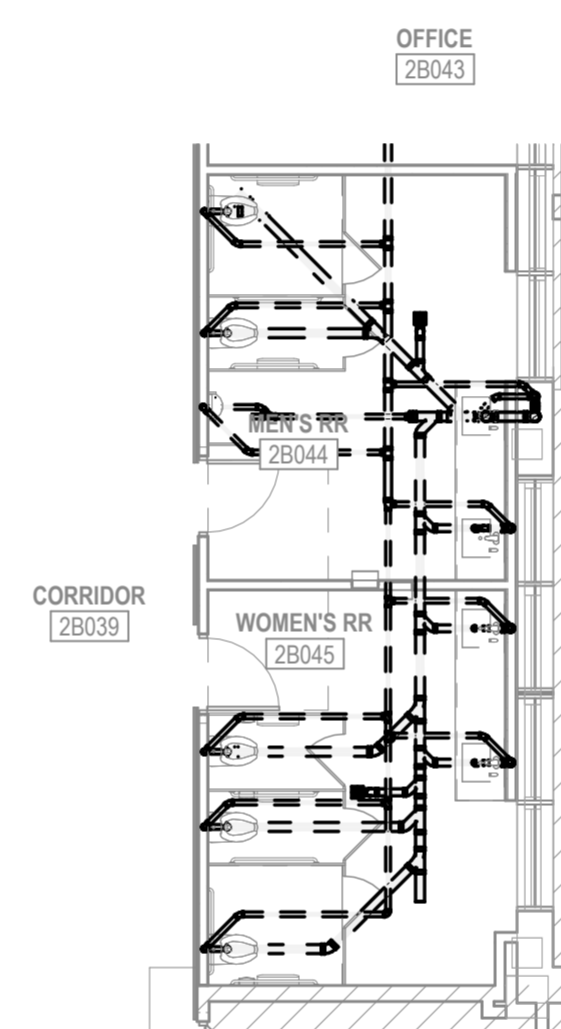
PHASE  
**PROGRESS BID SET**

DATE **11/26/2024** JOB NUMBER **24.0128**

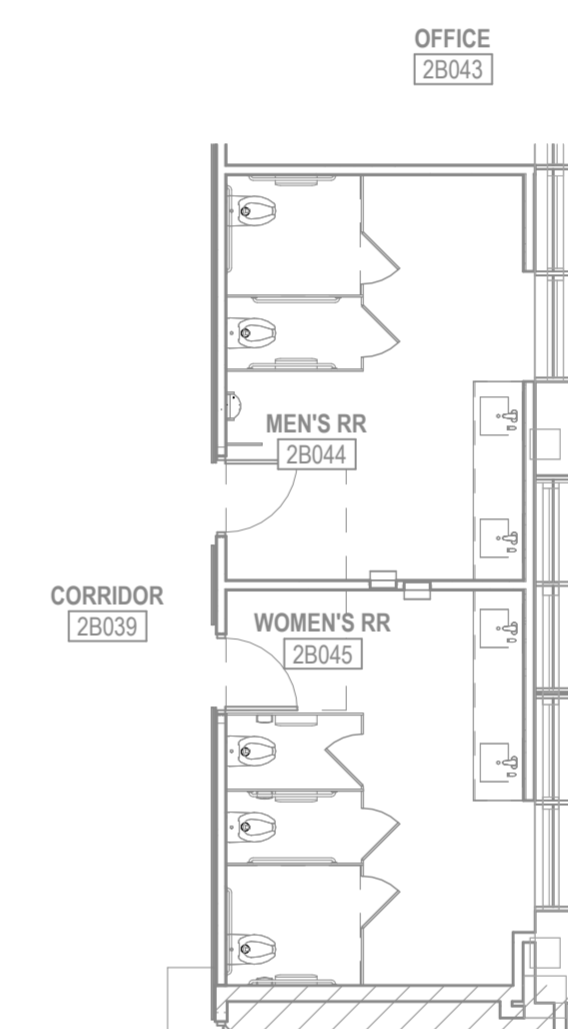
SHEET NAME  
**SECOND FLOOR  
 CONSTRUCTION  
 ENLARGED PLANS**

SHEET NUMBER

# P3.01



① SECOND FLOOR RESTROOM ENLARGED GRAVITY PIPING PLAN  
 1/8" = 1'-0"



② SECOND FLOOR RESTROOM ENLARGED PRESSURE PIPING PLAN  
 1/8" = 1'-0"